



329 Carnmoney Road, Newtownabbey, BT36 6JT

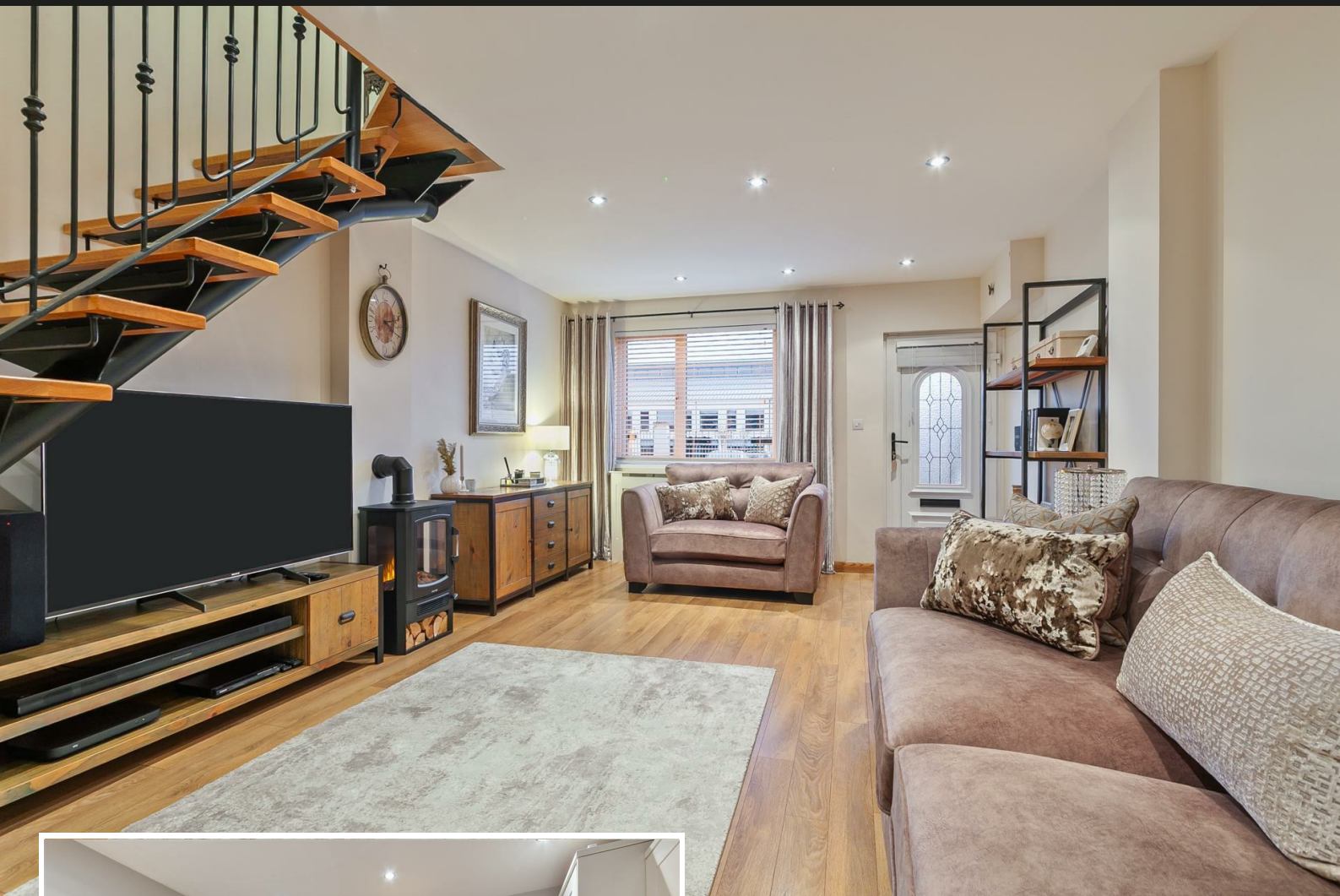
- Extended Mid Terrace Property
- Immaculately Presented Throughout
- Kitchen With Informal Dining Area
- Two Double Bedrooms
- Utility Store
- Fully Modernised
- Lounge
- Luxury Fitted Kitchen
- Deluxe Fully Tiled Shower Room
- Fully Landscaped Rear Garden

Offers Over £119,950

EPC Rating C



329 Carnmoney Road, Newtownabbey, BT36 6JT



PROPERTY DESCRIPTION

ACCOMMODATION

LOUNGE 20'4" x 12'5"

PVC double glazed front door. Wood laminate floor covering. Stairwell to first floor. Glass panelled door leading to:

KITCHEN WITH INFORMAL DINING AREA 12'0" x 10'9"

Luxury fitted kitchen with range of high and low level storage units with contrasting, solid quartz worktop. Ceramic Belfast sink. Cooker point with solid quartz splashback and extractor hood over. Space for fridge freezer. Integrated dishwasher. Gas fired central heating boiler (housed within matching unit). Solid quartz upstands to walls. Wood laminate floor covering. PVC double glazed door to rear garden.

FIRST FLOOR



LANDING

Access to roof space via slingsby style ladder.

BEDROOM 1 11'11" x 10'8"

Built in wardrobe/store. Wood laminate floor covering.

BEDROOM 2 12'5" x 8'9"

Built in wardrobe with mirror panelled, sliding doors. Wood laminate floor covering.

DELUXE FULLY TILED SHOWER ROOM

Contemporary, white, three piece suite comprising oversized shower enclosure, floating vanity unit and WC. Thermostat controlled mains shower unit with drench shower head. Chrome towel radiator.

EXTERNAL

Low maintenance front garden finished in decorative stone.

External lighting.

PVC fascia and rainwater goods.

Fully enclosed rear garden finished in patio areas, decorative stone and mature tree.

Outside tap.

UTILITY STORE 7'8" x 7'0"

Power. Plumbed for automatic washing machine. Tiled floor.

IMPORTANT NOTE TO ALL POTENTIAL PURCHASERS

Please note that we have not tested the services or systems in this property. Purchasers should make/commission their own inspections if they feel it is necessary.





Immaculately presented, extended, two bedroom, mid terrace property, conveniently situated off Carnmoney Road, Carnmoney village, Newtownabbey.

The property comprises lounge, kitchen with informal dining area, luxury fitted kitchen, two well-proportioned double bedrooms, deluxe, fully tiled shower room, with contemporary, white, three piece suite.

Externally, the property enjoys fully landscaped, low maintenance rear garden and utility store.

Other attributes include gas heating and PVC double glazing.

Ideal first time buy / buy to let investment alike.

Early viewing highly recommended to avoid disappointment.



Energy Efficiency Rating		
	Current	Potential
Very energy efficient - lower running costs		
(92 plus) A		
(81-91) B		89
(69-80) C	75	
(55-68) D		
(39-54) E		
(21-38) F		
(1-20) G		
Not energy efficient - higher running costs		
Northern Ireland	EU Directive 2002/91/EC	

Agents Note: Whilst every care has been taken to prepare these sales particulars, they are for guidance purposes only. All measurements are approximate and for general guidance purposes only and whilst every care has been taken to ensure their accuracy, they should not be relied upon and potential buyers are advised to recheck the measurements

INVESTORS IN PEOPLE
We invest in people Gold

PRS Property Redress Scheme

Proudly sponsoring



Awards

